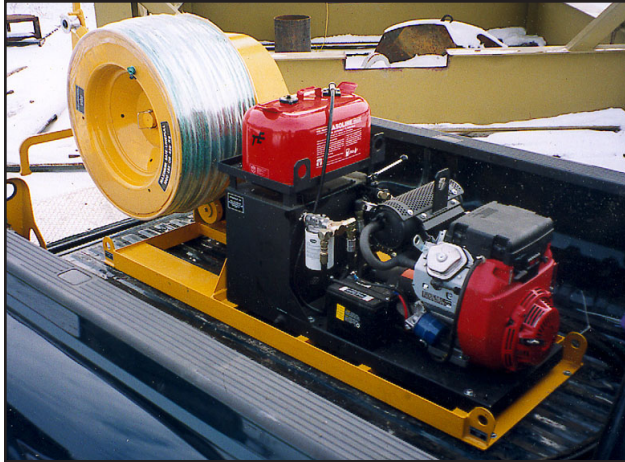


**PICK-UP BOSS™**

PICK-UP BOSS PULLER UNIT

Performance: 450 kg (1000 lbs) @ 120 m/min (450 fpm) linepull based on hydraulic supply of 45.4 l/min (12 gpm) @ 12.4 MPa (1800 psi)  
 Precise metering spring to neutral control valve  
 Linepull limiting tension control valve  
 Hydraulic pressure gauge  
 Anti-rotation clutch  
 Manual rope levelwind  
 Integral self-contained hydraulic power pack  
 Reliable 20 hp Honda gasoline engine  
 Designed to be mounted in a 1/2 ton or larger pick-up truck or flatbed

Length	2184 mm (86")
Width	762mm (30")
Height	1067 mm (42")
Weight	Approx. 358 kg (790 lbs)



**OUR PEOPLE CARE ...  
OUR EQUIPMENT IS THE PROOF**

**TENSION STRINGING EQUIPMENT & ACCESSORIES CATALOGUE**