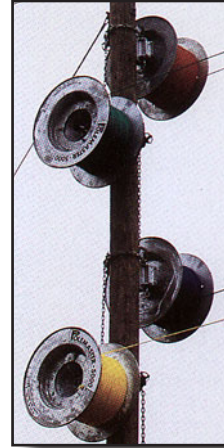


POLEMASTER™ SYSTEM



STANDARD SPECIFICATIONS

Pole mounted brake spindle with hot stick adjustable brake controller, web binder strap
Galvanized steel rope drum with 136 kg (300 lbs.) linepull rating

Model 2811 for 614 m (3000 ft) pilot rope
Model 2815 for 1828 m (6000 ft) pilot rope

Pilot Rope, 12 strand (10 mm) 3/8" - 5900 lbs - ABS, (8 mm) 5/16" 3600 lbs. ABS, (3000 ft) or 1828 m (6000 ft) lengths, "urethane" coated, available colours: blue, green, red, yellow, orange

WEIGHT

Brake Spindle	16 kg (36 lbs)
614 m (3000 ft) of rope & drum	66 kg (145 lbs)
1828 m (6000 ft) of rope & drum	84 kg (186 lbs)

OPTIONS

Truck winch adaptor shaft to mount reels on rewind power source (Model TWA)

**OUR PEOPLE CARE ...
OUR EQUIPMENT IS THE PROOF**

TENSION STRINGING EQUIPMENT & ACCESSORIES CATALOGUE